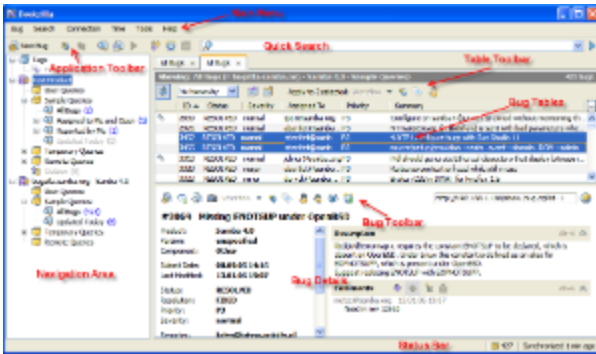


General Overview

Below is a general overview of the Deskzilla main window.



Deskzilla window has the following main elements:

| | |
|----------------------------|---|
| Main Menu | Main menu allows to access most of the application functions including search functions, connection configuration, time tracking, etc. |
| Application Toolbar | Application toolbar allows to access the most frequently used functions such as adding new bugs, synchronizing a local database, creating and running queries, creating distributions and accessing the time tracker. |
| Navigation Area | Navigation area allows to create and arrange a hierarchy of queries, distributions, and other elements to organize your work with bugs. |
| Quick Search | Quick search control allows to run a text search through the bugs of the currently selected query. |
| Bug Tables | All search results including the results of queries and quick search are displayed in tables. Use tab controls above the tables to switch between tables. |
| Table Toolbar | Table toolbar is shown when several bugs are selected. It allows to access functions available for the currently selected bugs. |
| Bug Details | Bug details area shows the detailed information on the currently selected bug. |
| Bug Toolbar | Bug toolbar allows to access functions available for the currently selected bug. |
| Status Bar | Status bar shows the number of bugs in the local database and synchronization status. |