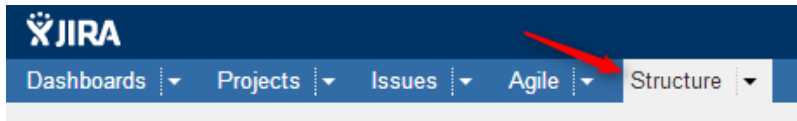


Structure Board

Structure Board is a full-screen view with the structure widget and without anything else, so it's good for focusing your work on the structure.

The screenshot shows the JIRA interface with the 'Structure' navigation menu selected. The main content area displays the 'HyperDrive Project' structure board. The board has a table with columns for 'Key', 'Summary', 'Progress', and 'TP'. The table lists several issues, including META-1, DRIVE-2, DRIVE-9, DRIVE-10, DRIVE-8, DRIVE-6, EMPR-2, and EMPR-3. The 'Progress' column shows progress bars for each issue. The 'TP' column shows icons for each issue. The board is titled 'HyperDrive Project' and has a 'Basic View' dropdown menu. The bottom of the board shows 'Showing 48 issues' and an 'Info' button.

Structure Board is opened when you click on the **Structure** top navigation menu in JIRA.



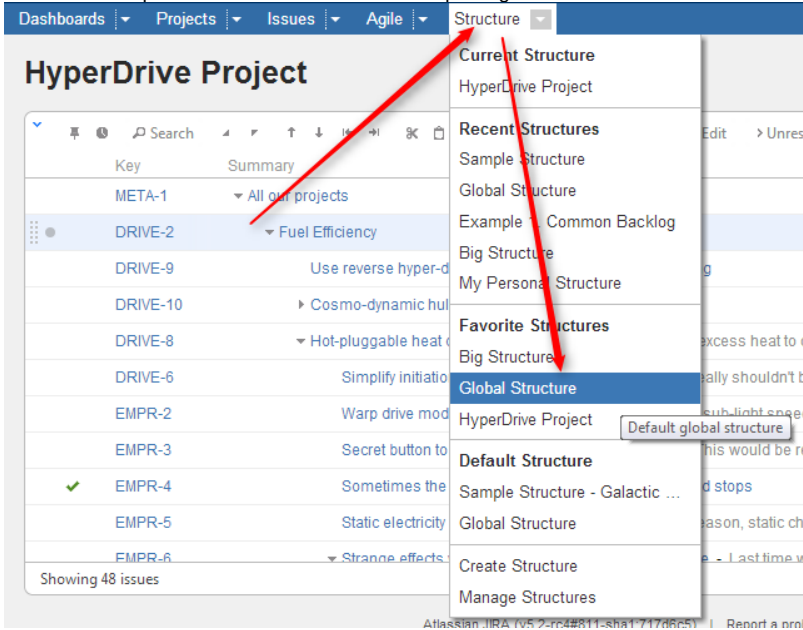
✓ You can press **g** and then quickly **s** on any JIRA page to open the structure board. (*Go Structure*)

✓ You can make the structure board your [JIRA Home page](#).

If you have several structures in JIRA, clicking **Structure** top navigation menu opens the most recently used structure.

You can open a specific, not current structure on the structure board using any of the following options:

- Click on the drop-down arrow beside **Structure** top navigation menu and choose one of the recently viewed structures.



- Click on the drop-down arrow beside **Structure** and select **Manage Structure** - this will take you to the Manage Structure page where you can browse for the structure you need, and then click on the structure name to open it.
- If you know the ID of the structure you need opened, you can directly open an URL:

<http://your.jira.address/secure/StructureBoard.jspa?s=structure-id>

Structure Board will try to accomodate structure widget nicely on your browser page to take advantage of most of the available space.

You can always share the way you see a Structure Board by creating a [Structure Perspective](#).