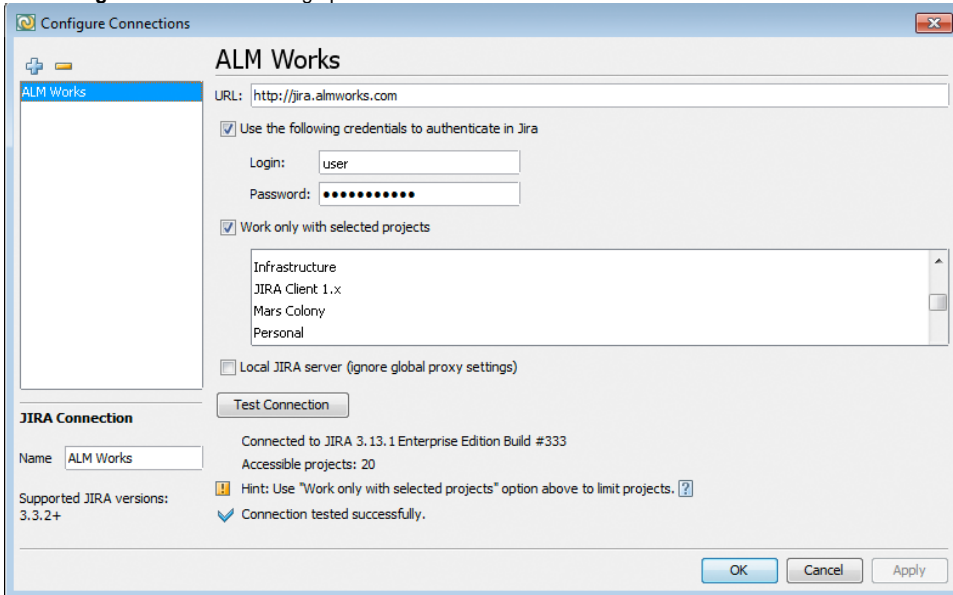


Configuring Connections

After you have established a [connection](#) with remote JIRA server, you may want to set up a new connection or modify the already existing one. To do so:

- Navigate to **File | Connection Manager** menu item or press **Ctrl + F9 (+ F8)**. The **Configure Connection** dialog opens.





Please refer to [Welcome to JIRA Client](#) dialog description for more information.

Creating a New Connection

To add a new connection:

1. Click the **Create Connection** button .
2. Repeat the procedure described in [this section](#) to create a new connection.

 We recommend you to select the **Work only with selected projects** option to limit the amount of your [local database](#) and improve JIRA Client performance. For details, refer to [knowledge base](#).

 Please see [this topic](#) describing how to solve the problems with connecting to JIRA servers via https://... connections.


Renaming a Connection


To rename a connection, do either of the following:

- Select a connection in the list of available connections of the **Configure Connection** dialog, navigate to the **Name** field located under the list and type a connection new name.
- Select a connection in the **Navigation Area**, right-click and select **Rename** or press **F2** and type a new connection name.

Removing a Connection

To remove a connection, do either of the following:

- Select a connection in the list of available connections of the **Configure Connection** dialog and click **Remove Connection** button  and confirm your intent to do so.
- Select a connection in the [Navigation Area](#), right-click and select **Remove Connection** and confirm your intent to do so.

 When you remove a connection, the issues are not removed from local database. Please refer to this [article](#) describing how to clear the local database and avoid performance problems.

See Also

- [Connection](#)
- [Adding New Connection and Retrieving Issues](#)
- [Navigation Area](#)
- [Local Database](#)
- [Performance Issues when Working with a Large Issue Database](#)