

Progress Configuration

Structure.Gantt allows you to configure how progress for individual tasks and groups is calculated.

Progress Calculation

Progress

Based on Work Estimates

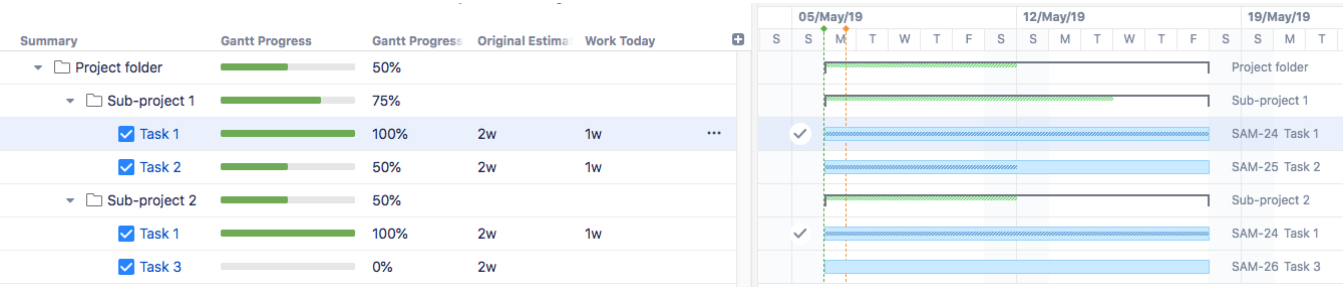
Progress will be calculated based on time tracking

By default, progress is calculated using the same settings as [Work Estimates Configuration](#). In this case, progress will be calculated based on the values (Time Tracking, Story Points, etc.) you selected in the Work Estimates section. If you prefer, you can specify a different field from Work Estimates or use a [Formula](#) for progress calculation.

While using Time Tracking, tasks with non-empty resolutions are treated as 100% complete. If using a Formula, it should return values from 0 to 100. All values higher than 100 will be treated as 100. (Hint: if your formula only returns values between 0 and 1, multiply by 100.)

A group's progress is always calculated based on the provided values for its tasks, regardless of the Progress field selected. [See below.](#)

Progress Calculation



When Time Tracking is used, a task's progress is calculated in the following way:

- For non-finished tasks, progress is based on Work and Time Spent values. In the above example, **Task 2** has a progress of 50% (2 week Original Estimate / 1 week Time Spent).
- Tasks are treated as 100% complete if their resolution date is not empty.

When Story Points are used for work estimation, a task's progress is calculated in the following way:

- 0% progress is shown for any non-finished task.
- 100% progress is shown for any complete task (i.e. tasks with a non-empty resolution).

For groups, the progress is calculated as a total progress of all unique tasks within the group:

- Sub-project 1** has a total progress of 75%, the average between **Task 1** (100%) and **Task 2** (50%).
- Sub-project 2** has a total progress of 50%, the average between **Task 1** (100%) and **Task 3** (0%).
- Project folder** has a total progress of 50%, the average of **Task 1** (100%), **Task 2** (50%) and **Task 3** (0%). Notice that Task 1 appears twice (under Sub-project 1 and Sub-project 2), but each task is only counted once when determining a group's progress.