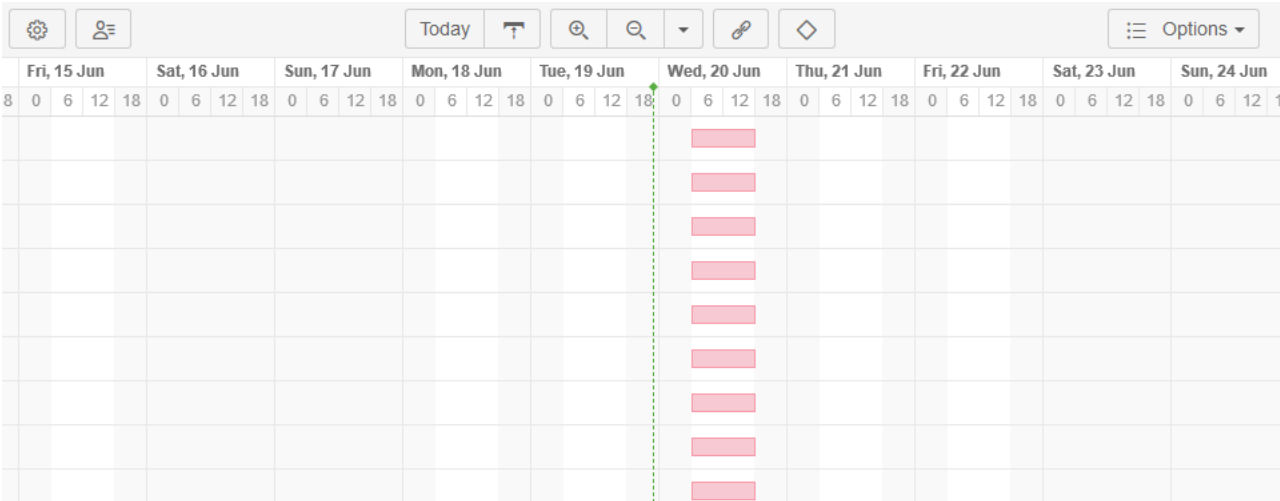
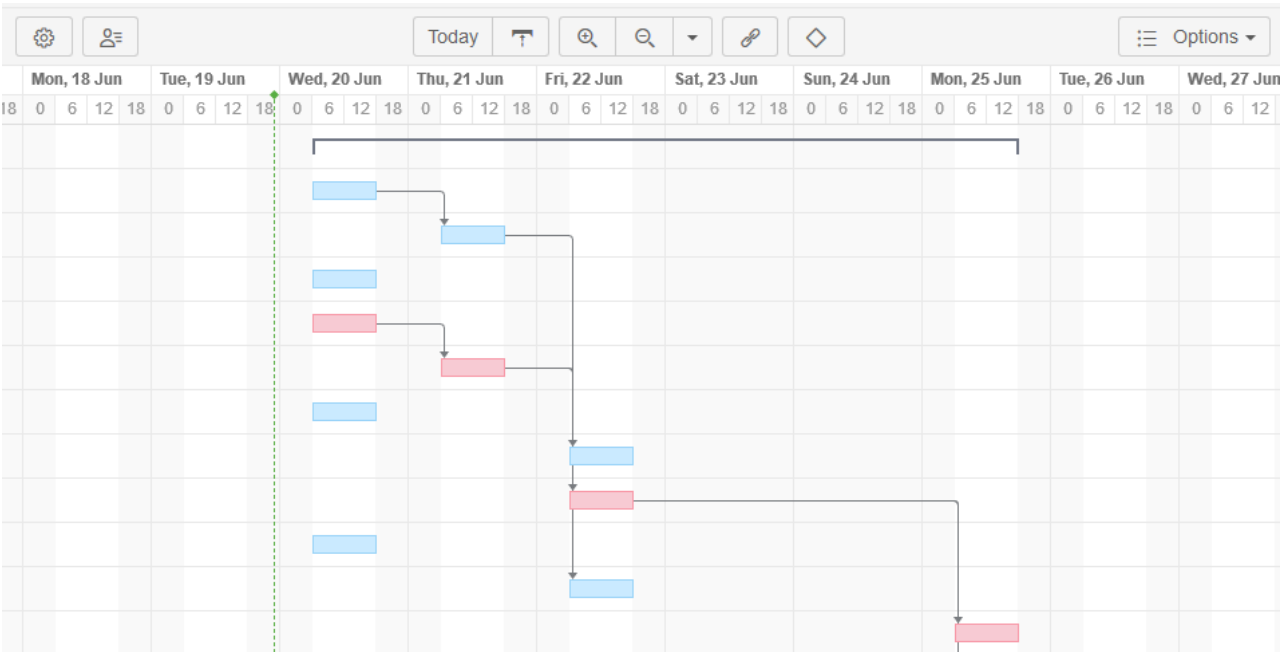


# Scheduling Tasks


By default, Structure.Gantt will auto-schedule tasks based on your project start date, task estimates, predecessors and dependency types. If you are working from a brand new structure and haven't yet set up dependencies or Start and Finish dates, chances are your Gantt Chart looks something like this:



As you create dependencies between items, your chart will automatically update so that successor tasks do not start until their predecessor is complete (or until the predecessor is estimated to be complete).



As you move items around in your structure or change dependencies, your tasks will move within your timeline as well.




The example above illustrates Finish-to-Start dependencies. You can also configure Start-to-Start, Finish-to-Finish and Finish-to-Start dependencies, and Structure.Gantt will schedule them accordingly.

For more information, see [Working with Dependencies](#).

## Manual Scheduling

While automatic scheduling is a powerful tool for visualizing your project timeline and working with dependencies, there are times when you may need to manually schedule Start or Finish dates. For example, you may need to push back a Start Date due to resource limitations or budgeting issues, or some tasks may require a strict Finish Date because of an impending deadline.

To manually edit task Start and Finish dates, you must first enable Manual Scheduling in [Gantt Configuration](#):

1. Click the Gantt Chart Settings button  on the left side of the chart toolbar
2. Under Gantt Chart Configuration, click **Edit** to update the current configuration (click **Manage Configuration** to select a different configuration or create a new one)
3. On the Scheduling screen, check the **Allow manual scheduling** box
4. Select the Jira fields that will be used for your Start and/or Finish dates

## Manual Scheduling

☒ Allow manual scheduling

Start Date  

Finish Date  

Milestone Date

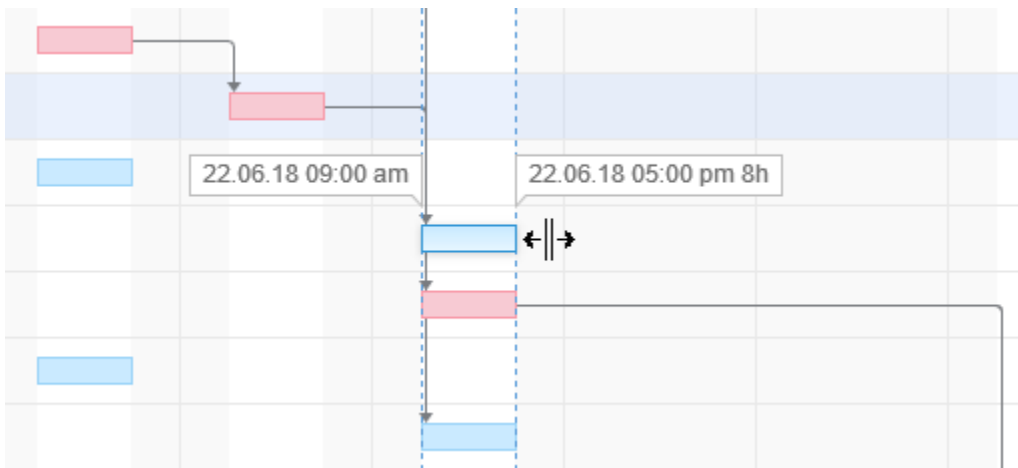
☒ Use Resolution Date as the Finish Date

Position a resolved issue to finish at its Resolution Date, unless it is manually scheduled.

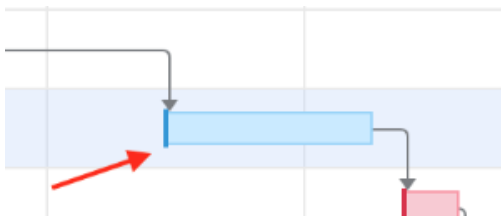
Once you have enabled manual scheduling, you can quickly adjust a task's schedule by dragging the task to a desired location in your timeline. As you move the task bar, one of three things will happen to your corresponding Jira fields:

- If you have manually set both Start and Finish dates, both date fields will be updated
- If you have only manually set the Start Date, only the Start Date field will be updated (the Finish Date will continue to be automatically scheduled based on task estimates and dependency types)
- If you have only manually set the Finish Date, only the Finish Date field will be updated (the Start Date will continue to be automatically scheduled based on task estimates, predecessors and dependency types)

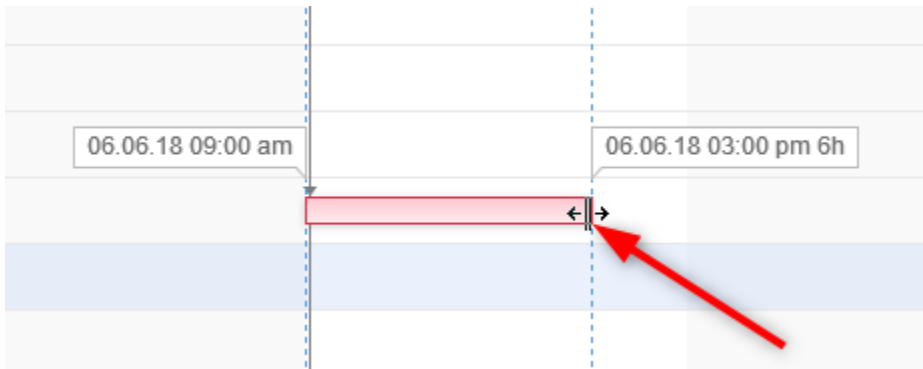
You can also adjust the Start and Finish dates by changing the corresponding Jira fields - either on the issue page or right in the structure (you'll need to [add the columns](#) containing your date fields).



Once you schedule a task manually, Gantt will place a visual indicator (dark, vertical line) at the corresponding end of the task bar, so you can quickly identify manually scheduled tasks.



To adjust a task's Finish Date (without changing the Start Date), hover over the right edge of the bar. Once the mouse pointer changes to the resize tool, click and drag left or right to set the new Finish Date. Since the Start Date remains unchanged, this process also updates the task's Original Estimate (if the task hasn't been started) or Remaining Estimate (if the task is in progress).



Scheduling uses the following rules:

- If neither Start nor Finish dates are defined, the task is scheduled automatically to start either at the Project Start Day you selected when configuring your Gantt chart or based on the task's dependencies. For example, in the case of a Finish to Start dependency, the task will be scheduled to start immediately following the Finish Date for the task it depends on.
- If you move a task in the chart, its Start Date value will be set accordingly, and the task will be considered scheduled manually. If the Finish Date is not set manually, it will be calculated based on the task's Start Date and duration.
- If you set the Finish Date manually, the Start Date will be calculated based on the Finish Date and duration. If you then move the task, the Finish Date will be adjusted accordingly.
- If you set both Start and Finish dates for your task, the duration will be ignored. Moving the task bar in the chart will change both the Start and Finish dates accordingly.



As you set the Start/Finish Date, the task is considered to be scheduled manually. This means it will stay at the defined position regardless of its dependencies.

To switch back to the Automatic Scheduling mode, click the task to see the details panel and toggle the Scheduling option to **Auto**. This will remove the Start/Finish Date values and place the task after its dependencies. If no dependencies exist, the Start Date will be set to the Project Start Day, as defined in the Gantt Chart Settings. You can also remove manual scheduling for a specific task by removing the start/finish dates from the corresponding Jira fields.

## Scheduling Conflicts

Structure.Gantt highlights any scheduling conflicts with a dark red line placed on top of the task bar.

For example, for finish-to-start dependencies, if a task is scheduled for a date earlier than its predecessor's Finish Date, Gantt will highlight this conflict.

To deal with the conflict, click the task and select one of the following actions:

- **Respect Link.** This will change the task Start Date to coincide with the predecessor's Finish Date. The task will stay in the Manual Scheduling mode.
- **Auto Schedule.** This will switch the task to the Automatic Scheduling mode, clearing its Start Date or Finish Date and scheduling the task based on its predecessor and the dependency type.
- **Ignore.** This will remove the highlighting from the task bar, but the conflict will stay, and the conflict details will remain in the details panel.

Next Step: [Adjusting Duration](#)

**Issue**

Item STMA-28 Story 1.3

Start 27 Apr 2017, 03:00 PM

End 02 May 2017, 12:00 PM

Duration 2d 5h

Progress 0%

Scheduling Auto ☒ Manual

---

**Potential Scheduling Conflict**

Task may need to be delayed for 3d 1h